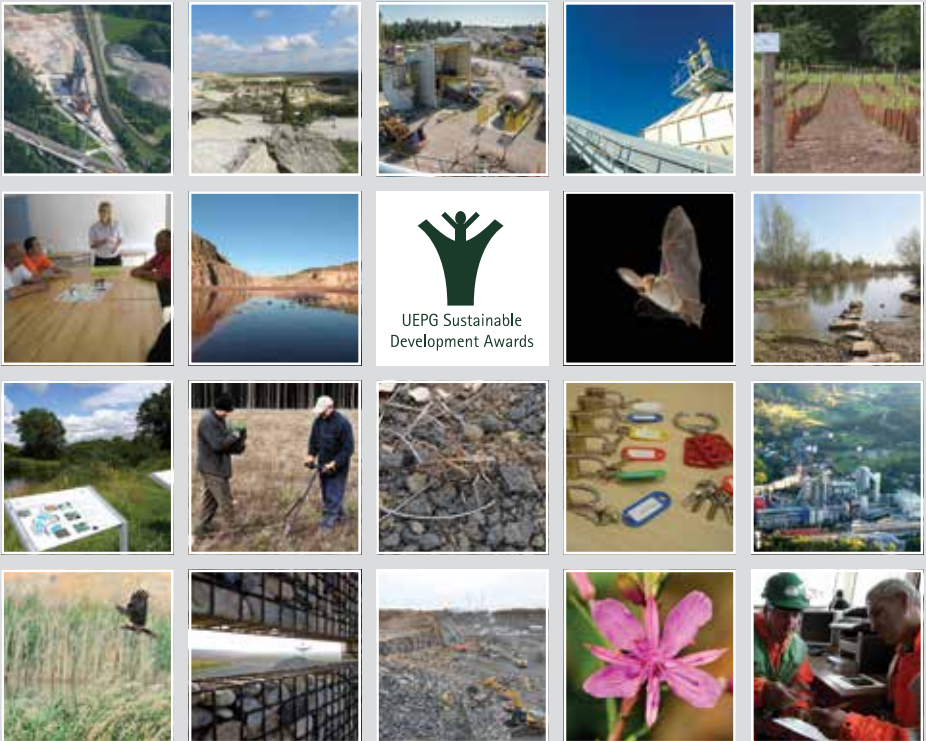




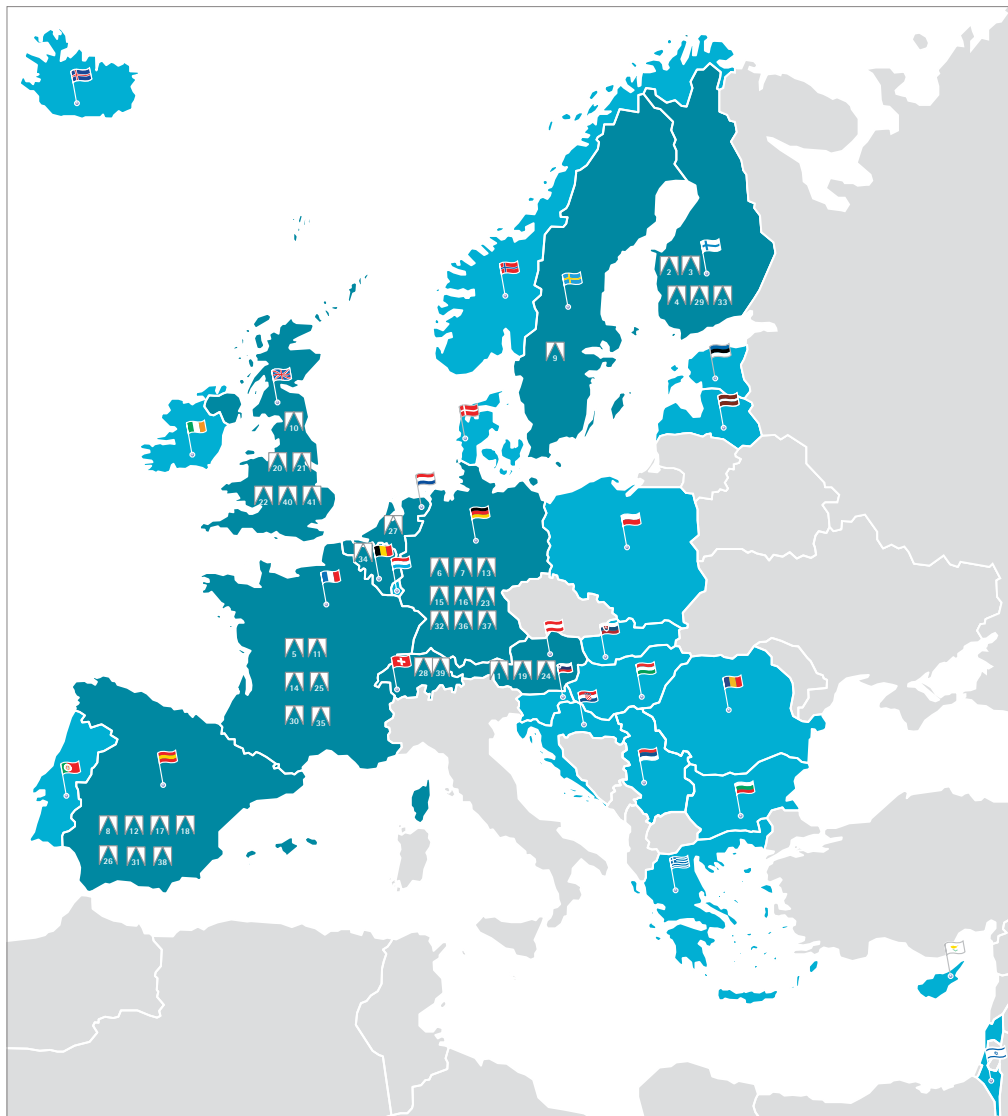
SUSTAINABLE DEVELOPMENT AWARDS 2016



UEPG Sustainable Development Awards 2013

Promoting good practice ★ Going beyond what is expected
Providing examples others can follow

UEPG Sustainable Development Awards 2016



1. Wopfinger Transportbeton GesmbH 2. Destia Ltd 3. NCC 4. Rudus Oy 5. CERF SAS 6. Hoffmann Mineral 7. Zapfwerke GmbH & Co. KG 8. Enimsa 9. Rådasand 10. Hanson Quarry Products Europe Ltd 11. Carrières et Ballastières de Normandie – EUROVIA 12. PREBETONS ÁRIDOS SLU – GRUPO VOTORANTIM 13. LZR Lenz-Ziegler-Reifenscheid GmbH 14. Lafarge Granulats France 15. Quarzwerke GmbH 16. RÖHRIG granit GmbH 17. SIBELCO MINERALES S.A. 18. Financiera y Minera – HeidelbergCement 19. Saint-Gobain Rijpijs Austria GesmbH 20. SIBELCO EUROPE 21. FM Conway Ltd 22. Marshalls 23. Kieswerk Maas Roeloffz GmbH & Co.KG 24. Hengl Mineral GmbH 25. PLATTARD – SORÉAL 26. SORIGUÉ S.A. 27. Dekker Grondstoffen B.V. 28. FAMSA 29. Rudus Oy 30. COLAS Midi-Méditerranée 31. Promotora Mediterránea-2 S.A. – PROMSA 32. Trollius GmbH 33. Rudus Oy 34. Sagrex – HeidelbergCement 35. Carrières du Boulonnais SAS 36. HeidelbergCement 37. RÖHRIG granit GmbH 38. SIBELCO MINERALES S.A. 39. JURA Materials 40. CEMEX UK 41. Smiths & Sons Blechning Ltd

▶ LIST OF ENTRIES

All entries in this publication are classified by country in alphabetical order. To help you finding entries according to your field of interest, this overview is listing entries by category.



Environment

Austria	★ Wopfinger Transportbeton GesmbH	06
Finland	Destia Ltd	06
Finland	NCC	07
Finland	Rudus Oy	07
France	CERF SAS	08
Germany	Hoffmann Mineral	08
Germany	Zapfwerke GmbH & Co. KG	09
Spain	Erimsa	09
Sweden	Rådasand	10
United Kingdom	★ Hanson Quarry Products Europe Ltd	10
France	Carrières et Ballastières de Normandie – EUROVIA	11
Spain	PREBETONG ÁRIDOS SLU – GRUPO VOTORANTIM	11
Germany	LZR Lenz-Ziegler-Reifenseheid GmbH	12



Social Progress

France	★ Lafarge Granulats France	12
Germany	Quarzwerte GmbH	13
Germany	RÖHRIG granit GmbH	13
Spain	SIBELCO MINERALES S.A.	14
Spain	★ Financiera y Minera- HeidelbergCement	14
Austria	Saint-Gobain Rigips Austria GesmbH	15
United Kingdom	SIBELCO EUROPE	15
United Kingdom	FM Conway Ltd	16
United Kingdom	Marshalls	16



Economic Contribution

Germany	★ Kieswerk Maas Roeloff GmbH & Co.KG	17
Austria	Hengl Mineral GmbH	17
France	PLATTARD – SORÉAL	18
Spain	SORIGUÉ S.A.	18
The Netherlands	Dekker Grondstoffen B.V.	19
Switzerland	★ FAMSA	19
Finland	Rudus Oy	20
France	COLAS Midi-Méditerranée	20
Spain	★ Promotora Mediterránea-2 S.A. – PROMSA	21
Germany	Trollius GmbH	21



Biodiversity

Finland	★ Rudus Oy	22
Belgique	Sagrex – HeidelbergCement	22
France	Carrières du Boulonnais SAS	23
Germany	HeidelbergCement	23
Germany	RÖHRIG granit GmbH	24
Spain	SIBELCO MINERALES S.A.	24
Switzerland	JURA Materials	25
United Kingdom	CEMEX UK	25
United Kingdom	Smiths & Sons Bletchington Ltd	26

► PRESIDENT'S INTRODUCTION



UEPG President, Jesús Ortiz, EU_GREENWEEK,
EU, Patrick Mascart

The UEPG Sustainable Development Awards is the major event to reward companies that have successfully integrated the social, economic and/or environmental dimensions of sustainable development into their operations. The UEPG Sustainable Development Awards promote the dissemination of best practices and encourage projects which go beyond what is required by planners and regulators. It is intended that the Awards should provide examples which others could follow.

UEPG launched its first European Restoration Awards scheme in 1997 followed by a second scheme in 1999 and a third in 2001. Due to the success of this programme it was decided to enlarge the scope to all aspects of sustainable development since 2005. In 2010 a special award was created for Biodiversity.

In 2016, we have had received 41 entries from 10 countries, all entries being of outstanding quality.

UEPG is honoured to have an independent Jury, each of the five members being internationally distinguished experts in their fields.

As in the past, UEPG is committed to all three pillars of sustainable development and in particular on health & safety, restoration, biodiversity and environmental best practice. More than half of all entries are falling under these categories. Restored but also active quarries and pits form an integral part of nature parks and Natura 2000 protected sites underlining the compatibility of aggregates extraction and nature protection.

Besides the publication in this brochure and on the UEPG website, all entries and Award Winners will be part of a touring exhibition in the different EU Institutions during 2017/2018. This will be the "calling-card" for our industry. It will continue to add value for the one who contributed to this year's Award and for the whole industry sector demonstrating excellence where policy decisions are being made.

I would like to thank our Members and all the companies who made the UEPG Sustainable Development Awards 2016 a success. Their efforts are most impressive against the background of the continued economic crisis. I would like to thank the Jury Members for their time to study in detail the 41 entries.

Jesús Ortiz
UEPG President

► JURY MEMBERS



Angelo Caserta
Birdlife Europe



Jean-Pierre Damm
industriALL



Robert Galler
Montanuniversität
Leoben, Austria



Sirpa Hertell
Committee of the
Regions and Espoo
Council, Finland



Jonas Satkūnas
EuroGeoSurveys

► Environment



Destia LTD

Creating a replacement habitat for the chequered blue butterfly

The High-quality orpine populations, which formed a prosperous habitat for the reproduction of the chequered blue butterfly, were located in areas where the quarrying operations of Destia were planned. The chequered blue butterfly is an endangered species which is given special protection in Finland. A decision was made to secure the preservation of the orpine habitats. The orpines were relocated to another place within the quarry area, in addition to this, an existing orpine population outside the quarry area was expanded. The habitat of the chequered blue butterfly and the success of the relocation are monitored now on an annual basis.



Wopfinger Transportbeton GesmbH

Nature Conservation Master Plan for Unteresiebenbrunn Quarry

With a sustainable production the quarry Unteresiebenbrunn of Wopfinger Transportbeton has minimised during the last 15 years the potential environmental impacts by developing a new Nature Conservation Master Plan. The concept was created together with the Technical Office for Biology. The aim was to optimise the measures currently foreseen for nature and species protection to be immediately and effectively realised during the processing and not only after extraction. The project demonstrates the compatibility between extraction and nature conservation.

Category:

DESTIA Environmental Best Practice



Category:



Environmental Best Practice

► Environment



Rudus Oy

Environmental Activities in the Kråkö Gravel Extraction Area

The extractive operations of Porvoo's Kråkö area began in the 1930s. After a stop of activities during 43 year, the activities restarted in 2003 and a plan was drawn up for recreational use of the area starting by an environmental assessment. The assessment revealed the population of moor frogs in a small pond. Following a 2007-2013 study and conclusions of nature experts, Rudus created an action plan which was presented to City of Porvoo and the environmental authorities. The objective of the company is to utilise the aggregates while preserving the area's natural values and recreational opportunities.



NCC

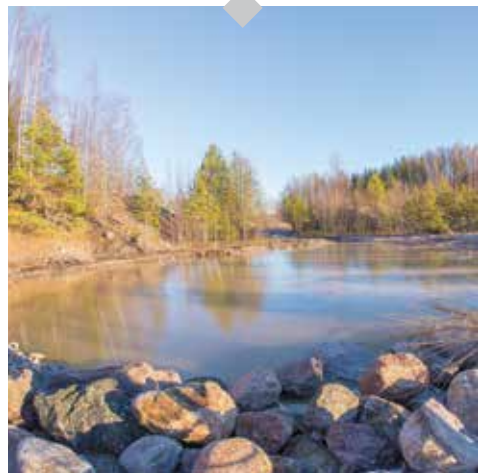
NCC KIELO Programme – Living Nature of Stone

KIELO-programme is the vision of NCC in terms of integrated biodiversity management system. Launched in 2012, KIELO enhances biodiversity in stone extraction sites. The main idea behind the project is 'constant development' and enhancement of biodiversity, already during extraction. At the moment there are 6 KIELO-project areas with the aim of implementing the project in all NCC sites in Finland. Each site has unique conditions and need appropriate methods of remediation. One example given is the Project area 'Black Lupine' restricting the spreading and growth of large-leaved lupine with wood ash.

Category:

Rudus

**Environmental
Best Practice**



Category:



**Environmental
Best Practice**

► Environment



Hoffmann Mineral

Living overall and long term sustainability

For 112 years, the company Hoffmann Mineral from Neuburg on the Danube in Germany extracts Neuburg siliceous earth. With its operation bound to a local natural resource the family-run company has always been strongly linked to the region and with its sustainable management to a positive contribution to nature. Safeguarding raw materials, water and energy is a main focus and long-standing practice. The 50-years-commitment of the company to protect environment is notably illustrated by its restoration of sites, open days to public and several awards received.



CERF SAS

Preservation of water resources

The creation of the site of Saint-Loup is the result of long term thinking and allows the community to maintain its supply of local materials. One can speak of eco-design on this project because the choice of the site was made by prioritising the measures of avoidance of the environmental stakes. The manufacturing process of materials allows 98.4% recycling of water available for an initial target of 97% (a part of the water remains with the produced materials). Employees are advised and sensibilised on the good management of the site with the duty to maintain the quantity and quality of water for future generations.



Category:

**Environmental
Best Practice**

Category:



**Environmental
Best Practice**



► Environment



Erimsa

Villalba I extraction concession – Ladra Quarry

ERIMSA has more than 30 years of experience in extractive operations, applying methodology in its work that is environmentally friendly and suitable with agricultural, livestock and forestry activities. The company is demonstrating under this project that its extractive activities are perfectly compatible with the preservation of biodiversity, and even increases the environmental value and protection of the SAC Ladra-Támoga-Parga. The company's work promotes the generation of new wetlands, the recovery of lagoon areas and the creation of large meadows for use in livestock operations, the primary economic engine in central Galicia.



Zapfwerke GmbH & Co. KG

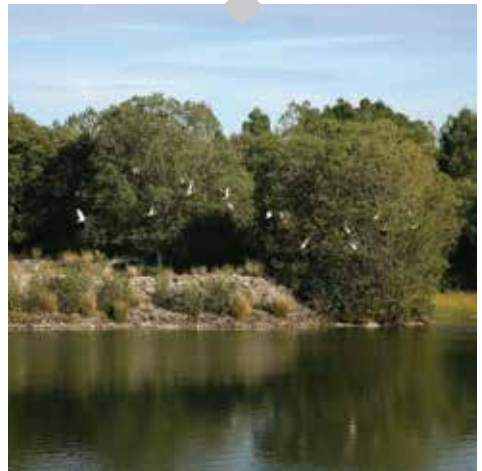
Increasing biodiversity through open cast sand extraction in the area of Kreuzstein Forest

By carrying out measures during sand extraction, Zapf's commitment to restoration has successfully proved that simultaneous plant introduction through continuous cycle flow does work in such areas. Engaging nature conservation expert methods, far beyond legal requirements, Zapf has contributed substantially to an increase of biodiversity. Fauna and vegetation monitoring results have confirmed the significance of the complex biotope developed within the "Kreuzstein" open pit area. The success story is a sustainable and unique succession in the nature area, sand with a marked increase in biodiversity, as early as 15 years after sand extraction.

Category:



Environmental Best Practice



Category:



Environmental Best Practice

► Environment



Hanson Quarry Products Europe Ltd

Middleton Quarry – Restoration to Multiple-uses

Middleton Quarry is located in the West Midlands in England, within the River Tame-valley. The site was largely intensive farmland, with degraded landscape features and character prior to excavation of alluvial sand and gravel deposits integrated with progressive restoration to beneficial landscape habitats and after uses. The new Middleton Lakes Reserve owned now by the Royal Society for the Protection of Birds is part of an extensive network of wetland sites in the Tame & Trent Valley. The site has long had populations of breeding waders and other birdlife. It also forms a major part of various River Trent-valley conservation and tourism initiatives.



Rådasand

Biofuel replaces fuel oil

The gravel pit belonging to Rådasand AB is classified as a national interest for the country's raw material supply thanks to its unique mineralogical characteristics suitable for casting or boiler sand in heat production. The gravel pit is also very advanced in the production of special sand products for other qualified purposes, such as sand filters for various forms of water purification. In 2014, Rådasand AB decided to convert the drying plant for the operations from traditional fuel oil to bio-oil to reduce carbon dioxide emissions and avoid risk of soil contamination.

Category:



Restoration

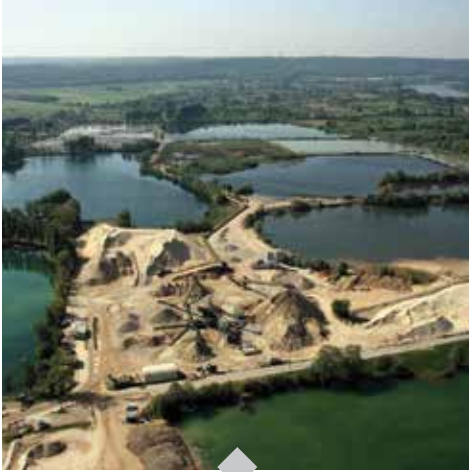


RÅDASAND

Category:

**Environmental
Best Practice**

► Environment



PREBETONG ÁRIDOS SLU – GRUPO VOTORANTIM

Rincón de Caya – Badajoz Gravel Pit

When the exploitation of an area comes to an end, the restoration, landscaping supply of topsoil and enhancement of new, suitable and fertile land can start. The project of PREBETONG ÁRIDOS (VOTORANTIM Group) is an example of how an active extractive site can have a very small affected area, where some of the restored areas are used as grasslands, mainly for cattle breeding, and the construction of a ham curer. Therefore, it is an exploitation that could be considered as an example of how several economic and potentially disparate activities can fruitfully co-exist.



Carrières et Ballastières de Normandie – EUROVIA

The alliance of environmental engineering and public works to recreate ecosystems

Since the end of the 1990s, the Yville-sur-Seine gravel pit, operated by Carrières et Ballastières de Normandie (CBN), has succeeded in maintaining, protecting and recreating the biodiversity on its site. This was made possible through consultations with scientists, public stakeholders, local associations, and specialised public works companies. The Yville-sur-Seine site is a true example of expertly controlled management of biodiversity within a quarrying operation. Through environmental engineering and the quarry's involvement, the ecosystems are recreated, demonstrating in a remarkable way that biodiversity and quarrying can be compatible.



Category:

Restoration

Category:



Restoration



▶ Environment



LZR Lenz-Ziegler-Reifenscheid GmbH

Transformation of orchards into a nature protection area via gravel and sand extraction

Riparian forests reputed as breeding grounds for biodiversity, have unfortunately, and to a large extent disappeared from river landscapes. The objective of the project "Gravel and Sand Extraction at the Nordheimer Au" from the company LZR is to create a nature protection area and a river meadow landscape. This demand responds to the European Water Framework Directive, which sees the function of riparian forests as flood water retention areas. In addition, a water reservoir for Nordheim has been created and Barren wasteland abandoned orchards will evolve into a nature protected area.



Category:

Restoration

▶ Social Progress



Lafarge Granulats France

Consultation and convergence of local actions

Lafarge has continued operating while discussing and working with a wide range of stakeholders in order to defend and rehabilitate the ruins of the Cluny Priory located in Le Pouzin and to protect the biodiversity on the Plateau of Rompon. Lafarge is committed to contribute to the collective knowledge of the natural environment of the Plateau de Rompon and their Natura 2000 areas with the aim of preserving and protecting the environment and also facilitating the understanding of its biodiversity to everyone.

Category:



Local Community Partnership



Local Community Partnership Award



► Social Progress



RÖHRIG granit GmbH

The Holiday-Camp at RÖHRIG granit® – Giving a future to our past

Since 2010, RÖHRIG granit offers in a two-year cycle a one week extraordinary and resource-intensive holiday-camp for 80 children. The Holiday-camp allows a playful education and an extensive understanding of the meaning of the use of stones for humankind, from the past to the future. The quarry is being experienced as an exciting place to work as well as a dynamic habitat. A final celebration concludes the holiday-camp where children are performing to show their projects towards an audience of around 400 visitors from relatives, to friends, associations and authorities.



Quarzwerke GmbH

Frechen Nature and Sand Explorers

The NaSa Explorers (Nature and Sand Explorers) project from Quarzwerke presents a free environmental and educational programme with guidance documents for children and a large public. Programmes for children are set up during and after school hours and holidays accompanied with visits. The children are given an exploration kit and they can build themselves an exploration collecting box and a plant press to discover local nature. The schools' programmes are instructed by the biologist of the company and spokesperson and by an appointed teacher. A special website was set up to provide information about the NaSa projects.

Category:



Local Community Partnership



Category:

Local Community Partnership



► Social Progress



SIBELCO MINERALES S.A.
Center of Arcos de la Frontera
extraction

Corporate Social Responsibility is a very important value within the Sibelco management. The activities of the company contributing to sustainable development are numerous. This concludes the promotion of restored land opened to the public for the use and pleasure of the community, social assistance and sponsorships. It also goes along with cooperation agreements and strong partnerships with local stakeholders, the support of cultural initiatives and sporting events as well as educative aspects towards extractive activities via the participation to European and local cultural events.



Category:

**Local Community
Partnership**



**Financiera y Minera-
HeidelbergCement**

Quarry Fall Protection System

The company 'General de Canteras' (FYM) has created a safety device, with all its elements certified, thanks to the workers' participation in all the phases, from the original concept to the development and field test. This safety system is both a collective and individual protective equipment and can be easily carried wherever it may be necessary. It is easy to assemble and very manageable, thanks to its low weight. It can adapt to any terrain, so that it can be used in any site with low cost and maintenance.



FYM
HEIDELBERGCEMENT Group

Category:

**Health & Safety
Best Practice**



► Social Progress



SIBELCO EUROPE

No dust teams' Using real time technology to identify required improvements in dust control and influence operatives to adopt healthy behaviours

Sibelco Europe were looking for a new way of showing to the workforce how dust levels varied throughout the process plants and within the activities they were carrying out, especially when particles are invisible to the naked eye. A small team called 'No Dust Team' comprising of Health, Safety and Engineering specialists developed the idea of combining real time dust level measurements in a graphical form together with a visual record of the activity or process being carried out. The desired outcome achieved is now used as a toolkit for employees.



Saint-Gobain Rigips Austria GesmbH

Safety First

Health and safety of the workforce is the top priority for Saint-Gobain Rigips Austria. The Occupational Safety and Health protection in the company on site is divided into three actions: including rapid response, prevention and conduct on site as awareness campaigns. The long-term objective of the company is zero accident. The mission is to create a sustainable production process; together with medical staff, and work council to offer health measures and recommendations for a healthier life within a safe working environment.



Category:

Health & Safety Best Practice



Category:

Health & Safety Best Practice



► Social Progress



FM Conway Ltd

Improved near hit reporting system following employee consultation

During a health and safety climate survey, the FM Conway Company received significant feedback from employees about the quality of the "Say What You See" Near Miss/Hazard reporting system. The employees felt the naming of the system was unclear and did not identify what had to be done. Consequently, the Company revised the System in a customised mobile app format, redesigned 'free post' card and set a confidential phone line. Training on the new system was provided and rebranded 'People First – Go Home Safe culture'.



Category:

**Health & Safety
Best Practice**



Marshalls

Auto-Locking saw guards for effective guarding by simple operation

When designing guards for machinery there is a consistent conflict between protecting the employee against dangerous moving parts and production. The following idea for safely guarding a machine, using perimeter guarding in a harsh confined area, has come through direct consultation within the workforce and using the engineering skills within Marshalls Company. What is unique about this project is the flexibility of the design. It can be used in any environment, on any perimeter guarding design, allowing 'simple' but safe access when required for maintenance or production activities.



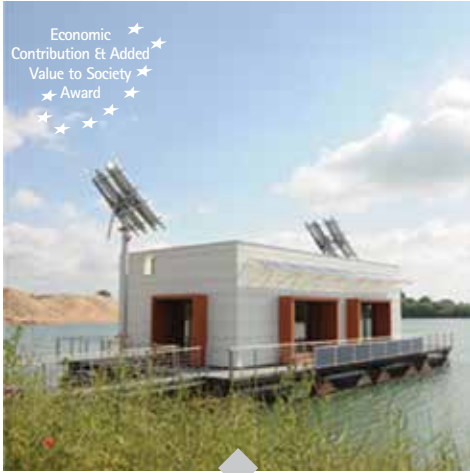
Marshalls
Creating Better Spaces

Category:

**Health & Safety
Best Practice**



▶ Economic Contribution



Kieswerk Maas Roeloff GmbH & Co.KG
Aqua Solar Village

The aim of the project of the Kieswerk Maas Roeloff was to investigate as to what extent water bodies, created by gravel extraction, could be used sustainably for a residential area. The first idea was to construct an energy passive building using renewable energy mainly produced by solar panels and using the heat energy of the surrounding lake. This 100 sqm building, floating on a lake next to a gravel extraction site, was monitored over several years with 100 stationary sensors installed recording once every 90 seconds. The results of this research project will help to boost concepts of sustainable residential areas.

Category:



Economic Contribution & Added Value to Society



Hengl Mineral GmbH
Flood protection in Limberg quarry

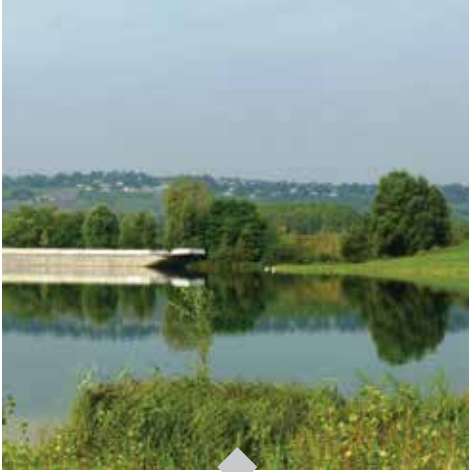
Since more than 100 years the extraction site of Hengl Company, called the Manhart Mountain ridge, supplies aggregates for road construction, railway ballast and armourstone for flood protection in northern Lower Austria. Together with the flood protection department of Lower Austria, municipalities and the landowner, Hengl Company developed a project to ensure flood protection in this area for hundred years with sustainable social and ecological benefits for the whole community.

Category:

Hengl Economic Contribution & Added Value to Society



► Economic Contribution



SORIGUÉ S.A.

Extractive activity La Plana de Corb –
Contribution as added value to society

Through the activities carried out in the industrial complex La Plana del Cor, over 25 years the company SORIGUÉ contributes to the development of its surroundings and adds value to society. Out of the aggregates and construction activities, the site also comprises after restauration plantations of olive trees and cereals, a research laboratory, a centre for the processing of heavy materials, a cogeneration power plant and an olive oil mill. In addition, there are also areas for exhibition and the promotion of talent and innovation. The productive cycle closes and acquires meaning through the cultural activities happening in the complex.



PLATTARD – SORÉAL

Loop the loop

Since 1885, 6th generations of the Plattard industrial group is solidly established in Villefranche sur Saône (Rhône). The quarry spreads over an area of 135 hectares with the creation of water plans. The entire site is subjected to a natural and ecological redevelopment. This coverage was strengthened in 2013 with a territorial project involving the State along with local authorities. The project enables the company in somehow to close the loop from extraction to production, use, recycling and return to nature a part of what was borrowed from nature.

Category:

soriguē Economic Contribution &
Added Value to Society



Category:

Economic Contribution &
Added Value to Society

► Economic Contribution



FAMSA

Gravel that generates energy
for 100 households

Since 1922, FAMSA has been producing hard materials essential for use in mobility applications and public and private construction. Through green, responsible and pioneer thinking, FAMSA is actively involved, day in and day out, in reducing greenhouse gas emissions. The project was designed so that transporting material (from quarry to manufactured site and distribution site) enables energy to be recovered and generated. FAMSA is committed to the natural world, thus marrying economic and environmental sustainability. The proof lies in the entry outlined, which helps to power 100 households.



Dekker Grondstoffen B.V.
Honswijkkerplas

Since 2008 Dekker Grondstoffen company has worked on the development of a recreational lake and a natural lake close to the village Tull en't Waal. This project improves spatial quality and creates added value for the community by making a recreational lake with all facilities accessible; reducing the risk of floods; improving water quality to promote rheophilic fish species and creating a safe environment for different types of amphibians and breeding birds in line with Natura 2000 Directives. It also stimulated the economic development of the region.

Category: **Operational Best Practice, Process and Product Innovation**



Category:

Economic Contribution & Added Value to Society

▶ Economic Contribution



Rudus Oy
Rudus Ecosystem Hotel

The idea behind the ecosystem hotel was to transfer rare and endangered plants, and their ecosystems, from, for example, infrastructure and housing construction sites to a 'Ecosystem hotel'. In 2014, Rudus established an ecosystem hotel together with the Finnish Environment Institute in its gravel extraction area in Raasepori in Southern Finland. Plants, together with their hummocks, were transferred due to the widening of the nearby highway. Critical endangered species like little maiden and thyme, were saved together with their ecosystems.

Category: **Operational Best Practice, Process and Product Innovation**
Rudus



COLAS Midi-Méditerranée
Reduced production of sterile products through investment in automated liming facility

The limestone from the Sainte Colombe quarry, located in the Pyrénées-Orientales, has a significant clay fraction and may result in a significant proportion of fines with bad characteristics for construction. The company studied possible solutions to greatly reduce the production of fines. After the installation of new processes and many trials and tests on materials before and after treatment, the system today allows an optimisation of the deposit which ultimately extends the life of the site and reduces environmental impacts.



Category: **Operational Best Practice, Process and Product Innovation**



▶ Economic Contribution



Trollius GmbH

Fiddling around for Complete Recycling

The objective of the Hermann Trollius Company is 100% resource recycling with the goal of achieving a closed recycling circuit. A sludge residue consisting of the finest particle from washing the limestone and dolomite remains in the primary screening. This suspension, consisting of the finest grade calcium and magnesium particles and valuable clay minerals was, until now, treated as a useless residue and was dumped in large quantities. Thanks to innovative best technology and contribution of the workers, particles left shall now find use as fertiliser in a natural recycling circuit for the benefits of the Environment.



Promotora Mediterránea-2 S.A. – PROMSA

ARIBLACK project on Slag Aggregates



Category: **Best practice in**

Innovation, Recycling and Manufactured Aggregates

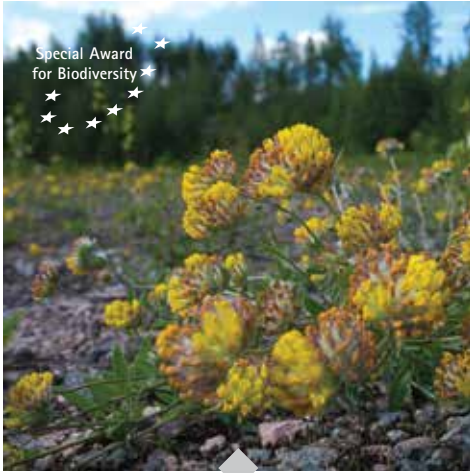
Ariblack emerged from the opportunity among steel smelting companies to make use of waste derived from their very own activity. PROMSA and Arcelor Mittal joined forces to form Ariblack, which consists of recycled aggregates from smelting waste. This steel manufacturing waste used to end up in landfills, which had a significant effect on the environmental and high procedural costs. As a result of the treatment process of these materials, they are given a second life, a practice that drives and promotes a Circular Economy.



Category: **Best practice in**

Innovation, Recycling and Manufactured Aggregates

► Biodiversity



Sagrex – HeidelbergCement Biodiversity at the Quenast quarry – Creation of a new nature trail

The scientific community is more and more interested in quarries and the substitutions habitats they offer for endangered species. Since 2011, Sagrex and Natagora (NGO) have undertaken a partnership to manage biodiversity in Sagrex quarries. One of their projects is the Quenast nature trail. The 271 plants species, 49 species of birds and 8 species of amphibians observed during a scientific mapping highlighted the high biological value of the quarry. Considering the potential of the site, researchers suggested to create a trail showing to the public what a quarry can offers to biodiversity.



Rudus Oy Rudus Lumo Programme

The LUMO programme conserves and promotes the diversity of nature on a voluntary basis before, during and after extraction. Rudus works closely with nature conservation organisations, officials and the neighbours of aggregate extraction areas. It is an integral part of the environmental sustainability work of the company, in which both the personnel and management participate. The programme has created better living conditions for hundreds of birds, insects, butterflies, frogs and plants. It has saved endangered plants and animals and provided work to unemployed people.

Category:

Rudus Special Award for Biodiversity 2016

Category:



Special Award for Biodiversity 2016



► Biodiversity



Carrières du Boulonnais SAS
Carrières du Boulonnais SAS

From 2014 to 2015, within the operating scope of the SAS Carrières du Boulonnais, three actions have demonstrated the will of the company to maintain and develop remarkable biodiversity on its site. A first action was lead to identify and protect areas of high floristic potential in partnership with the Regional Natural Park of Caps and Marais Opale. A second action was taken to follow up the reproduction of the European Eagle Owl. A final action was taken to install an educational and informative apiary addressed to a large public from employees to school.



Category:
Special Award for Biodiversity 2016

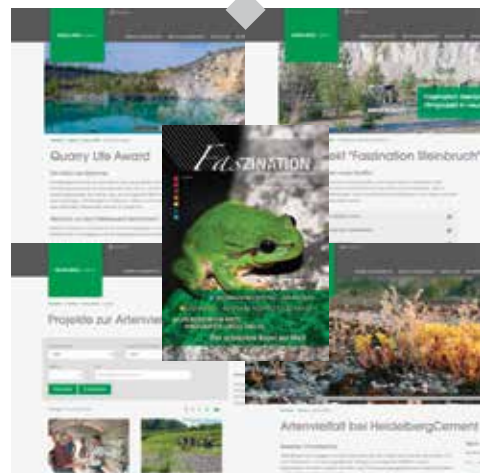


HeidelbergCement
Biodiversity in Digital Media

In 2014, the HeidelbergCement website had a fundamental improvement to emphasis the work of company on biodiversity. Visitors of the website can now obtain information in digital format on the development of biodiversity in the quarries of the company, nation-wide biodiversity projects and the Quarry Life Award, also available on social media. Visitors can also discover co-operations and partnerships with conservation organisations and schools, as well as, learning more on biodiversity from books and brochures, touring exhibitions, films and interactive didactic nature trails.

Category:

HEIDELBERGCEMENT
Special Award for Biodiversity 2016



► Biodiversity



RÖHRIG granit GmbH
Biodiversity of a dynamic habitat at
the quarries of RÖHRIG granit®

During operations, the development of biodiversity is being encouraged through specific actions that are guided by numerous experts from the German NGO Nature and Biodiversity Conservation Union (NABU). Special attention is being paid to the yellow-bellied toad conservation program and also to the eagle owl and the peregrine falcon. The company signed a nature conservation agreement with the Darmstadt Regional Administrative Council to turn the quarries into bird sanctuaries. A sustainability management system will be implemented in 2016 with the appointment of a representative for environment and nature protection.



Category:

**Special Award for
Biodiversity 2016**



SIBELCO MINERALES S.A.
Center of Arcos de la Frontera

The appropriate and innovative management of biodiversity during the process of minerals is a commitment to ecological profitability acquired by Sibelco Europe as part of their activity. Those activities range from studies of improvements related to increased ecological connectivity to proper and innovative biodiversity management during the extraction and restoration. The restoration focuses on the needs of future ecosystems and anthroposystems, creating ecological corridors and initiatives that provide social value from the restored spaces. The recovery of these areas are intended to social benefits and aiming at different interest of intergenerational groups including leisure, culture, sports, tourism and education.

Category:



**Special Award for
Biodiversity 2016**



► Biodiversity



JURA Materials Jura Materials goes wild(bee)

In 2014, the company launched a wild bee protection project, which was put into action in 2014 and 2015 under the title "JURA Materials goes wild(bee)". With the vision of implementing effective measures for wild bees at as many sites belonging to JURA Materials as possible, a specialist team reviewed 37 sites. A nature conservation association assisted in the planning and construction of the wild bee hotels. The "JURA Materials goes wild(bee)" project created a multitude of new habitats for the small, hard-working creature. These protection measures are extremely important for wild bees and the preservation of biodiversity.

Category:



Special Award for Biodiversity 2016



CEMEX UK

International site management and restoration to preserve priority species – Turtle dove and Twite

In line with its commitment to preserve biodiversity, CEMEX UK has been working at a number of UK sites to create favourable habitat for priority bird species in Europe. This work has been coordinated and developed jointly with other European operations where CEMEX has a quarry footprint and connected to migratory corridor in France and Spain. One example of this outstanding collaboration with NGOs was to conserve the Turtle Dove across the western European migration corridor. Another example is in Dove Holes quarry, where CEMEX UK and the Royal Society for the Protection of Birds are working to conserve the Twite.

Category:



Special Award for Biodiversity 2016



► Biodiversity



Smiths & Sons Blechington Ltd Ardley North & Gill Mill Quarries

Smiths & Sons (Blechington) has recently planned to restore its Ardley North quarry to an impressive wetland of inter-linked high quality ponds and wet grassland, benefitting invertebrates and birds. At the Gill Mill main site, progressive restoration of worked sites has delivered a remarkable wetland nature reserve at Rushy Common, with recreational lakes, that link to the wider river valley landscape. In addition a new restoration plan of a further extraction area approved includes one of the most extensive reed beds in southern England with public access and holiday lodges which will provide revenue for ongoing management and enjoyment.

Category:



Special Award for Biodiversity 2016

UEPG IN A NUTSHELL



UEPG

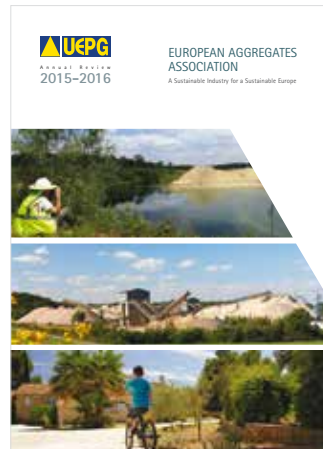
"Union Européenne des Producteurs
de Granulats"

UEPG stands for "Union Européenne des Producteurs de Granulats" (European Aggregates Association, Europäischer Gesteinsverband).

Since 1987, UEPG represents the European Aggregates Industry in Brussels, now with Members in 29 countries.

At the service of its Members, UEPG actively represents their interests and best practices towards the European institutions and other stakeholders with a focus on health and safety, access to local resources, recycling, excellence in environmental stewardship and biodiversity.

UEPG vision is a Sustainable Industry for a Sustainable Europe with mission to be the Industry Champion and a trusted Partner.



▶ FACTS AND FIGURES

Aggregates are a granular material used in construction. Aggregates are sand, gravel (including marine aggregates), crushed rock, recycled and manufactured aggregates. The diagram below illustrates the sources, intermediate and end uses of aggregates:



The European [EU28+EFTA, 2014] aggregates production is

2.7 billion tonnes/year,

representing an annual turnover of an estimated €15 billion.



The aggregates industry comprises

15,000 companies (mostly SMEs),

producing at



25,000 sites (quarries and pits)



Aggregates demand is just on

5 tonnes per capita per year.



with just over

200,000 people employed (including contractors).



The aggregates sector is by far

the largest amongst the non-energy extractive industries

in numbers of sites, companies, numbers employed and tonnages produced.

Aggregates are produced from natural sources extracted from quarries and pits and in some countries from sea-dredged materials (marine aggregates). Recycled aggregates derive from reprocessed materials previously used in construction, including construction and demolition residues. Manufactured aggregates are sourced from industrial processes, for example from blast or electric furnace slags or china clay residues.



15%

Infrastructure
(Bridges, Harbour, etc.)
Offshore Pipeline stabilisation



25%

Residential Buildings
(Houses, Apartments)



20%

Roads, Runways,
Railways, Waterways



20%

Commercial Buildings
(Offices, Factories,
etc.)



20%

Social Buildings
(Hospitals, Schools,
etc.)

UEPG aisbl

Rue d'Arlon 21 | 1050 Brussels | Belgium | Tel: +32 22 33 53 00 | secretariat@uepg.eu | www.uepg.eu

EU Transparency Register: 15340821653-49