



# site batching solutions

Hanson is one of the country's leading producers of ready-mixed concrete.

We have a wealth of experience in all aspects of concrete production and have successfully managed a large number of site batching operations throughout the UK.



Canary Wharf, London.

In recent years we have supplied over two million cubic metres of concrete through our dedicated fleet of concrete site batching plants to all sectors of the construction industry.

#### **Commercial/retail**

Canary Wharf, London  
Swiss Re headquarters, London  
St David's shopping centre, Cardiff  
Quinn Glass bottle production facility, Elton, Cheshire  
RBS headquarters, Edinburgh  
Energy recovery facility, Newhaven, East Sussex  
Various distribution warehouses



LNG tank, Milford Haven.

#### **Energy**

Liquefied natural gas tanks, Milford Haven and Isle of Grain  
Uskmouth power station, Newport  
Nuclear reprocessing facility, Sellafield, Cumbria

#### **Transport**

A1 widening, Yorkshire  
Upper Forth crossing, Kincardine  
Channel Tunnel Rail Link  
Cambridge guided busway



Channel Tunnel Rail Link.

#### **Water**

Sewage treatment works, Esholt, West Yorkshire  
Water treatment works, Rutland

#### **Hospitals**

Walsgrave, Coventry  
Pinderfields, Wakefield  
Addenbrooke's, Cambridge

Go to [www.hanson.com/uk/concrete](http://www.hanson.com/uk/concrete) to view further case studies and product information

# Benefits of site batching

## Dedicated on-site concrete batching plant

- A site plant provides continuity of supply throughout the project's lifecycle.
- Site plants are supported by our dedicated fleet of nearly 800 franchised delivery vehicles.
- In the unlikely event of a plant breakdown our national network of over 200 ready-mixed concrete plants can provide back-up for as long as necessary.

## Consistent, quality assured ready mixed concrete

- Our modern plants provide highly accurate mixing for quality concrete, batch after batch.
- We can formulate bespoke mixes for every type of job, including high flow/high strength concrete for pumping.
- We can offer a wide range of wet batch production capacities, from 60 to 150 cubic metres per hour.
- With our supply chain partners we can offer a full range of admixtures including pumping aids, retarders and waterprooferers.
- All our plants are certified by the Quality Scheme for Ready Mixed Concrete (QSRMC). Our experienced in-house technical staff will be on hand to advise on all aspects of quality and performance.

## A sustainable solution

- On site batching delivers the material right where you need it, keeping trucks off the roads and transport costs to a minimum.
- Recycling units can be supplied with all our plants – these can recover water and aggregate from truck and plant washing, and from returned concrete.
- We can help you reduce CO<sub>2</sub> emissions associated with the manufacture of concrete. Our cement works produce five per cent less CO<sub>2</sub> per tonne than the industry average using the most energy-efficient dry-process kilns. And we are the UK's leading supplier of ground granulated blastfurnace slag, a cement replacement in concrete made from domestic iron production that can reduce greenhouse gases by 40 per cent or more.
- If necessary, we can provide plants with full cladding to minimise noise and dust.

## Expert advice throughout

- We will provide operational and technical advice through the early site planning process and continuous support through the whole of your project's lifecycle.
- We can offer advice on all aspects of the concrete supply, from the suitability of site batching, to helping you plan the site layout for optimal efficiency and advising on mixes and pumping.
- We will ensure you receive the right concrete supply for your project at competitive rates.



Mobile plant at Sellafield.



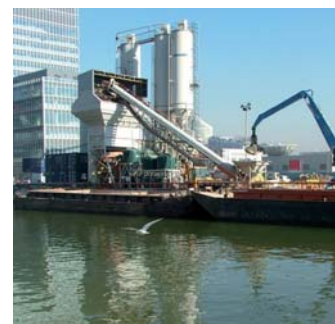
Groundworks at Cardiff St David's.



Uskmouth power station.



Stratford City.



Floating plant at Canary Wharf.

For further details please call 08705 258258 or email [enquiries@hanson.com](mailto:enquiries@hanson.com)

# Site batching plant – easy set up

## We have the right plant for the job

With over 20 plants we have the flexibility to serve a range of projects, with short lead times.

## Minimal site preparation needed

For all but the most demanding jobs, preparing the site is simple. Where appropriate, we can supply site plants with integrated steel foundations to keep site preparation to an absolute minimum. General site requirements are shown below.

## Quick set up

Many of our plants can be moved to any part of the country by truck. Once on site, we will arrange for the plant to be set up. This usually takes less than one week, depending on plant size. Our plants can be quickly dismantled and removed from site at the end of the project.

## Materials supply

Our fully integrated supply provides a wide range of aggregates, sand and gravels, cement and ground granulated blastfurnace slag, with fully managed deliveries to site by road, rail and water.

## Experienced plant operators

We will provide fully trained and experienced staff to manage the day to day operation of the plant.

## Stringent health and safety standards

All our site batching plants are run to the same high safety standards as our static operations. All operations are regularly inspected.

# Site batching plant – site requirements

■ Approx 2,500 square metres site area, including sunken catchpit, washout bay, and space for aggregate storage as necessary

■ Mains power with 300kva 3 phase – or as dictated by plant spec

■ Mains water – min 75mm

■ Telephone/ISDN lines

■ Washout/settlement/drainage – site facilities

■ Loading shovel

■ Fuel point

Depending on the job and the site plant we recommend, exact site requirements will vary.

Our team will be happy to advise on what is needed to prepare the site.

Hanson is the UK's leading supplier of heavy building materials to the construction industry, producing aggregates (crushed rock, sand and gravel), ready-mixed and precast concrete, asphalt and cement-related materials and a range of building products including concrete pavers, tiles and clay bricks. Hanson is part of the HeidelbergCement Group, which employs 61,000 people across five continents. HeidelbergCement is the global leader in aggregates and has leading positions in cement, concrete and heavy building products.

**Hanson UK**  
**Hanson House**  
**14 Castle Hill**  
**Maidenhead**  
**Berkshire**  
**SL6 4JJ**

For further information call us on 08705 258258  
or email [enquiries@hanson.com](mailto:enquiries@hanson.com)

 **Hanson**  
HEIDELBERGCEMENTGroup