



wonderwall[®]



Lightweight cladding system
finished with high quality clay brick slips



Wonderwall® – The system

Lightweight cladding panel system with high quality clay brick slips

Hanson's Wonderwall® cladding system cleverly combines the advantages of modern construction techniques with the appeal of traditional brickwork.

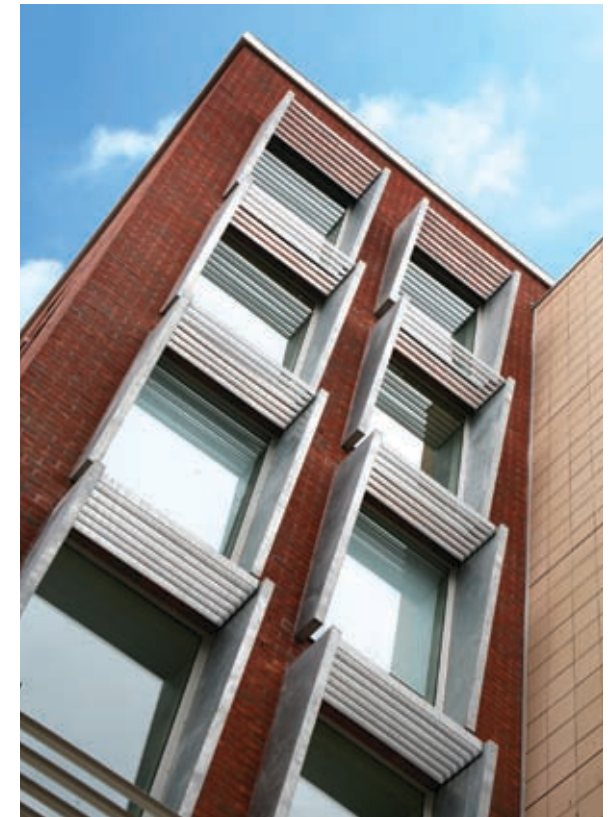
Installation is much quicker than traditionally built masonry and to a higher quality standard. It's ideal for use as a durable, decorative and thermal insulating finish to external vertical walls.

Wonderwall® is suitable for fixing to existing or new build structures that use masonry, dense concrete, modular units, timber or metal frames.

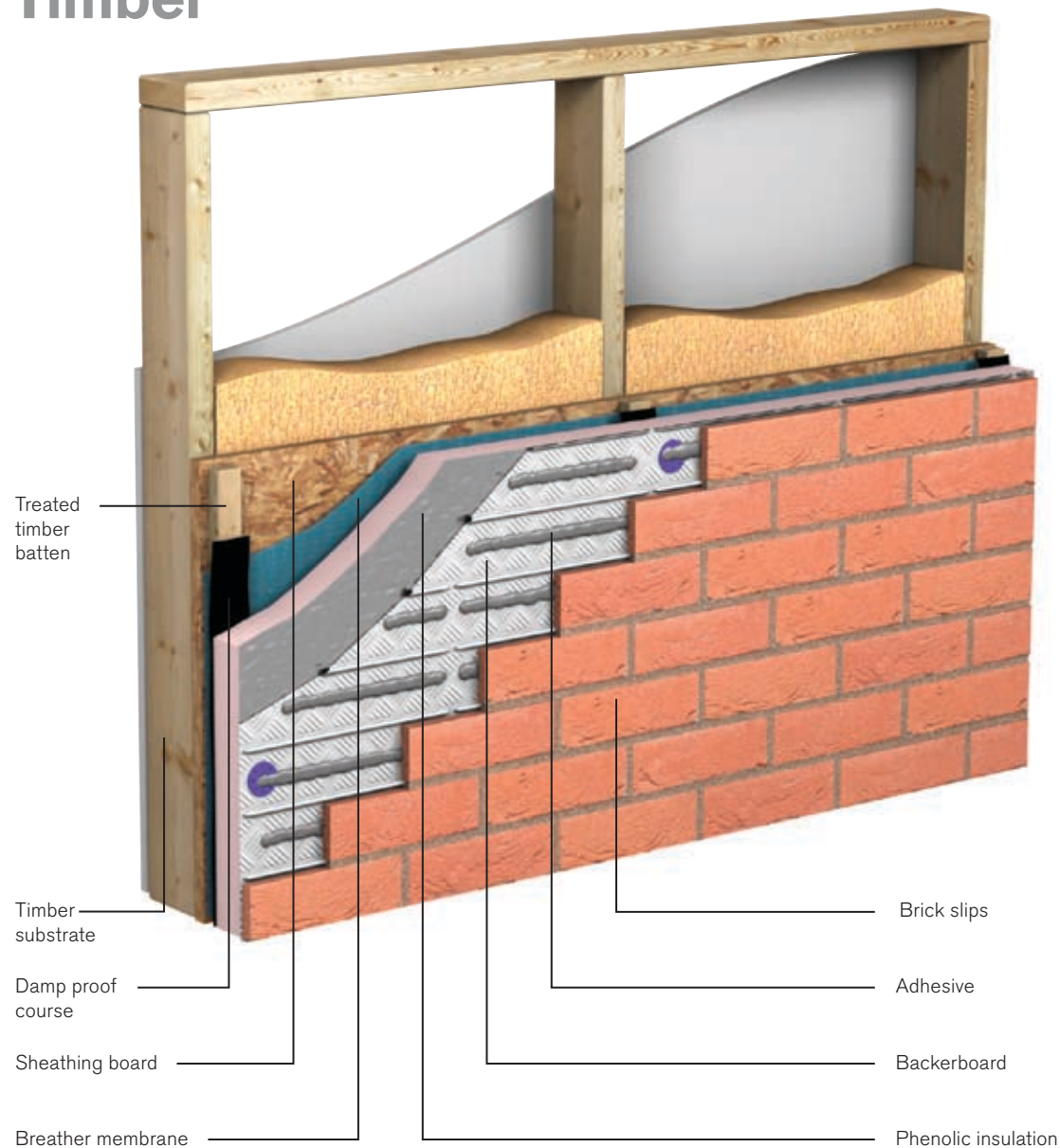
The system comprises a rigid phenolic insulation panel which Hanson pre-bonds to a brickwork coordinating carrier sheet. This composite panel is then fixed to the substructure on site, and brick slips are fixed to the carrier sheet using a purpose made adhesive. A specialist pointing mortar completes the installation and gives the perfect finish.

Wonderwall® incorporates standard 20mm brick slips; however small areas such as corbels and dentil courses can be achieved by altering the thickness of the finishes from 15mm to 30mm.

External corners, soldier courses and reveals can also be achieved by the use of L-shaped pistol slips.



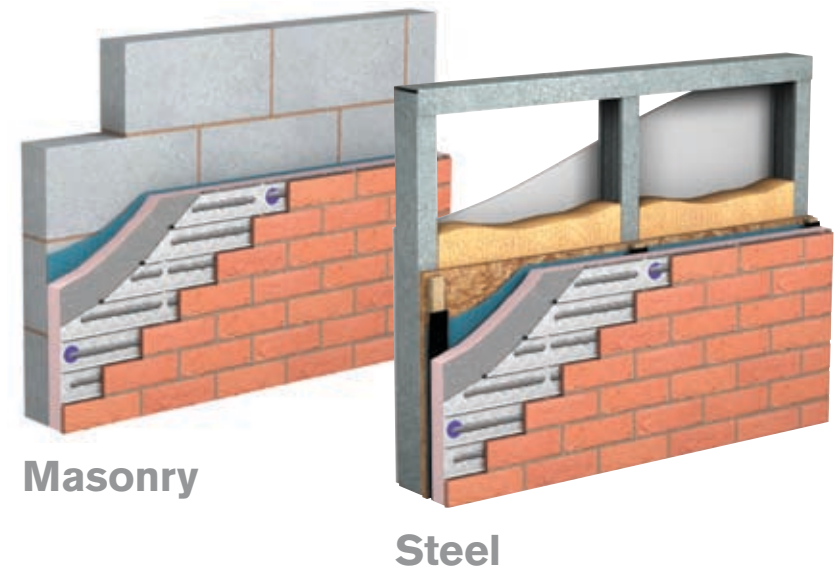
Timber



System flexibility – Hanson’s Wonderwall® cladding system can be fixed against almost any substrate. The illustrations show three of the most popular construction substrates.

Hanson’s Wonderwall® cladding system has been successfully applied on many projects nationwide. It’s versatility has resulted in it being selected for

a wide variety of developments, from new build housing and commercial buildings through to local authority, educational and refurbishment projects.



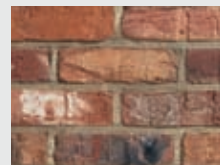
Features and benefits

Using the Wonderwall® cladding system as an external finish to a development or refurbishment project brings many features and benefits including:

- **Faster and easier installation** than traditional masonry
- **High insulation values** can be achieved
- **Aesthetically pleasing** giving a traditional brick finish
- **On-site flexibility** enables shaping to suit openings and other building details
- **Durable system** that is comparable with traditional masonry
- **Suitable for use with masonry**, modular units, metal and timber frames
- **Versatile system** that can be used on new builds or refurbishment projects

Brick finishes and styles

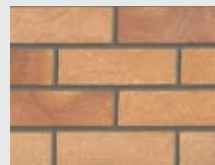
A wide variety of brick finishes are available, including extruded and stock facing slips.



Rochester Blend



Arden Red Multi

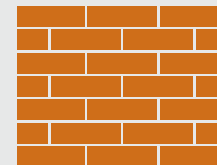


Village Harvest Multi

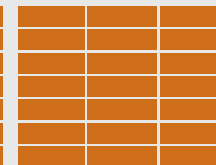
Being lightweight, Wonderwall® provides a method of finishing areas where traditional brickwork can't be incorporated, such as staggered gables or balconies on framed structures.

Brick bonds

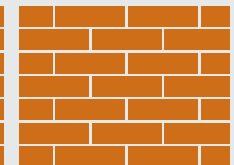
A wide variety of brick bonds such as Flemish, English, stretcher and stack, can be easily achieved.



Stretcher



Stack



Flemish



Alignment of backboard



Spacing and frequency of fixings



Attach backboard to the substrate



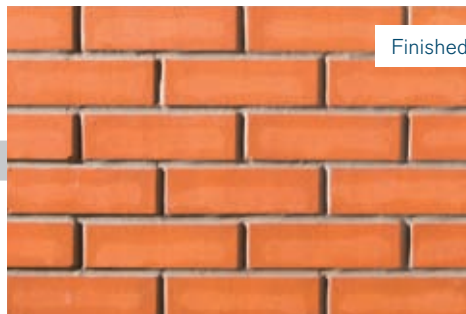
Application of adhesive

Installation

Hanson's Wonderwall® lightweight cladding system is fast and easy to install. A rigid insulation panel with pre-formed brickwork carrier sheet is fixed to a suitable substrate. Brick slips are then fixed to the carrier sheet using a purpose made adhesive. A specialist pointing mortar completes the installation.



Adhering brick slips to backboard



Finished



Finishing



Tooling of the mortar joint



Pointing of the mortar joint

Greatorex Street, London



This development of student accommodation is surrounded by traditional brick buildings constructed with 'London' Stock bricks, so material selection was paramount.

After exploring many possible alternatives to overcome the challenging planning aspects of the building, Wonderwall® was specified.

To blend in with the surroundings, Hanson's Red Bank Gobelin brick was selected by the Architect.

By choosing this product it also addressed some of the sustainability issues since it was possible to cut two slips from every brick as this was a 'slop' moulded brick.

Altogether, 78,000 slips were cut, supplied and installed by Hanson with the external façade being completed in less than nine weeks, demonstrating the speed of the installation.

Benefits

- Speed of installation
- Versatility
- Low on-site wastage





Local Authority Housing, Swansea

This refurbishment project was put forward by Swansea County Council to address dated council housing in their region.

In this instance older housing stock was surrounded by much newer builds. To bring this stock in line with the area the council decided to clad the existing buildings. In total two semi detached properties were refurbished using Hanson's Wonderwall® system.

The Wonderwall® system was specified due to a number of construction and design criteria. The work had to be undertaken in a very short space of time as the residents remained living in the houses throughout.

The finish of course had to be durable and fit in with the surrounding properties in terms of style, colour and overall appearance so Wonderwall®, proved the ideal choice in a challenging planning environment.

Benefits

- Speed of installation
- Flexibility of finish
- Limited site disruption





After



Before

Bow Road, London



This London housing development comprises two blocks of flats, one three storeys, one six. They're timber framed with SIPS panels and a reinforced concrete stair core for overall stability.

Hanson's Wonderwall® system was selected as a specialist masonry cladding for approximately 2000sq m to complement the alternative rainscreen cladding finish.

The design and construction criteria embodied in Wonderwall® meant that two specific styles of brick slip could be used in accordance with rigorous planning requirements and made for greater construction speed.

Limited site access problems were solved as Wonderwall® is ideal for construction within a small area.

The system also allowed for minimal on-site wastage with a traditional appearance whilst still using modern materials and construction techniques.

Benefits

- Solved restricted access on site
- Speed of installation
- Low on-site wastage





WILLES
APARTMENTS
TO LET
0203 381 9722

WILLES APARTMENTS
RENTING AND SALES
0203 381 9722

wave
AVERY



Hanson Plc – a global business

Hanson is one of the world's largest suppliers of heavy building materials to the construction industry. We produce aggregates (crushed rock, sand and gravel), ready-mixed and precast concrete, asphalt and cement-related materials and a range of building products including concrete pipes, concrete pavers, tiles and clay bricks.

We are part of the Heidelberg Cement Group, which employs 70,000 people across five continents and has leading positions in concrete and heavy building products and is the global leader in aggregates.

Hanson Building Products is the UK's largest brick and aircrete block producer. We also produce aggregate blocks, bagged aggregate and cement products, renders, pavers, pre cast floors and stairs, SUD systems and prefabricated building systems. The division incorporates London Brick[®], Thermalite[®], Red Bank[®], Cradley[®], Formpave[®] and Struchtherm[®].

Hanson Building Products

Building Systems Department
Birchwood Way
Cotes Park Industrial Estate
Somercotes
Derby
DE55 4NH
Tel: 01773 602432
Fax: 01773 603134
Email: mmc@hanson.biz
Web: www.hansonwonderwall.co.uk

Hanson Building Products – a sustainable business

Hanson Building Products is committed to being a sustainable business and contributing to sustainable development. We achieve this by continuous improvement of our manufacturing and extraction processes and by providing products which contribute to sustainable construction.

Made at factories certified to ISO 14001, our clay and concrete products have many features which assist our customers in constructing attractive, sustainable buildings which enrich the built environment. These include: durability, low maintenance, flexibility, flood resistance and ability to be recycled. Providing insulation and thermal mass, our products are ideal for zero carbon developments. We advise on how best to use our products in sustainable buildings and how they contribute to high ratings under the Code for Sustainable Homes and BREEAM.

